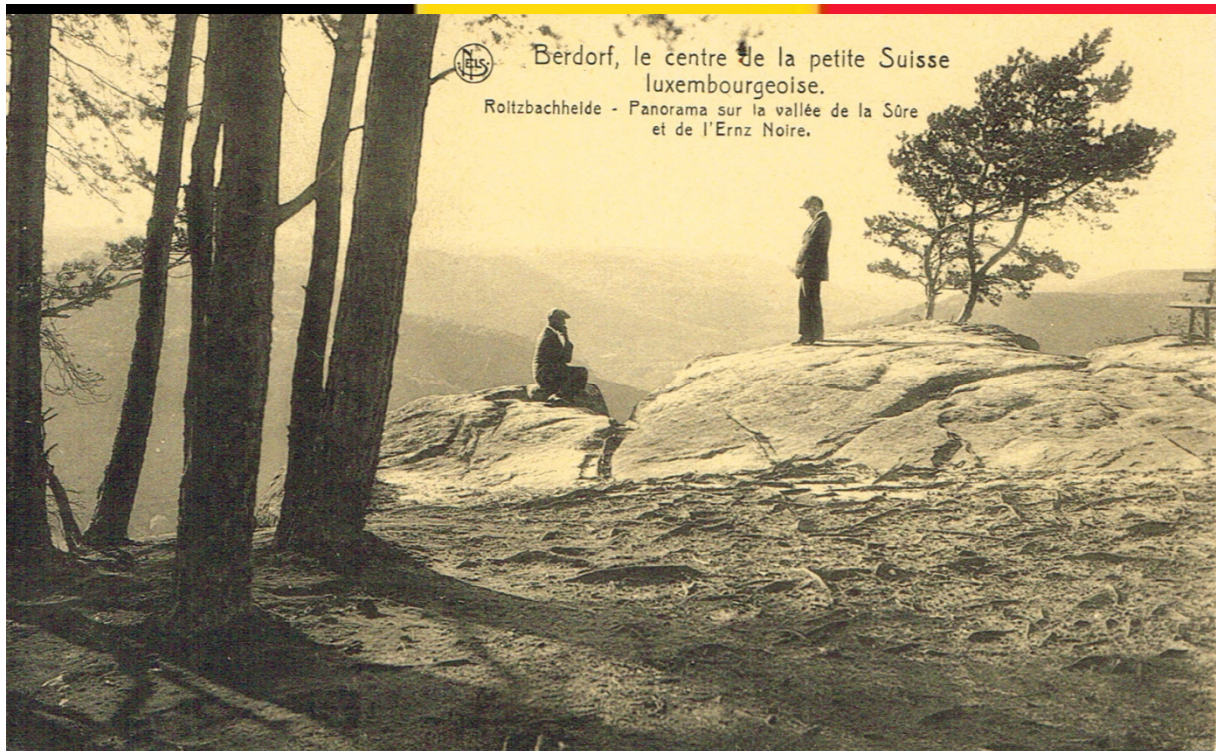


## 12. A peek into Luxembourg: Clervaux and Petite Suisse



If you're deep in the Ardennes region and you'd like a slight change of view, you can go to Luxembourg. Attention: there are three Luxembourgs. One is a province in Belgium. One is the grand duchy, an independent country the size of a Belgian province. The third is the capital city of the grand duchy. The grand duchy has three official languages: French, German and Letzebuergs.

In the north of the grand duchy you'll find **Clervaux**, a small city with a couple of sights worth seeing. The most important is the Family of Man exposition in the castle. It's one of the very first photography exhibitions travelling the world in the 1950s after being conceived by Clervaux-born photographer Edward Steichen for the MoMa in New York. The black-and-white photographs focus on all aspects of humanity. An optional audioguide provides interesting in-depth information about both photographs and photographers.

Apart from the permanent Family of Man exposition, the World Press Photo exhibition is annually set in Clervaux for a couple of weeks. It would be great if you could combine the two and experience the differences and similarities between them.

Still another exhibition is held in the castle: a war exhibition. The church, the town and the abbey up high are worth a glance. The best sight is the view of Clervaux from the high road as you enter the village. If you're not interested in the photography exhibition you might find the rest of the village isn't really worth your while.

If you like walking you really should visit Petite Suisse, or Müllerthal in German. It's a big stretch of woods, rocks, and babbling brooks. You can walk for days if you like, there are camping facilities and hotels to spare.

A map with the paths can be bought at the tourist offices and some tourist attractions in the villages of Consdorf, Berdorf, Echternach, Beaufort, Waldbillig,... Some walks can be downloaded for free on <http://www.mullerthal.lu/?langue=en>

